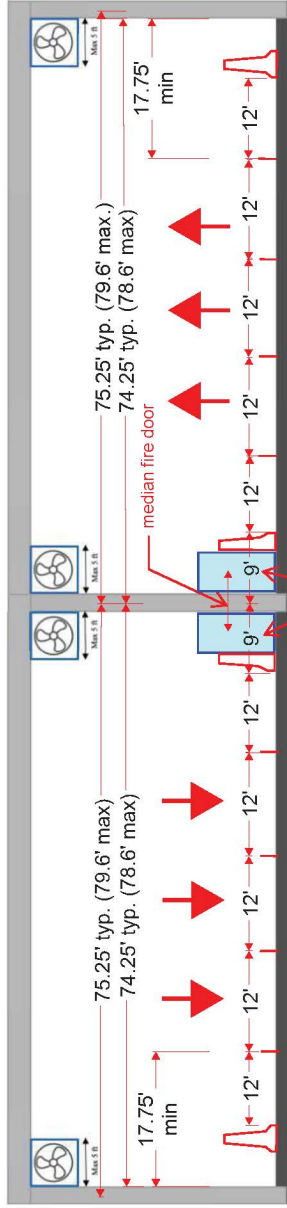


# Appendix J. Fire and Life Safety Assumptions Layout

This page is intentionally left blank.

**I-5: ROSE QUARTER  
IMPROVEMENT PROJECT**

Fire & Life Safety  
(Cross Section with 1st Fmns)  
PACIFIC HIGHWAY  
MULTNOMAH COUNTY  
20% DESIGN LAYOUT  
Last updated: December 4, 2020

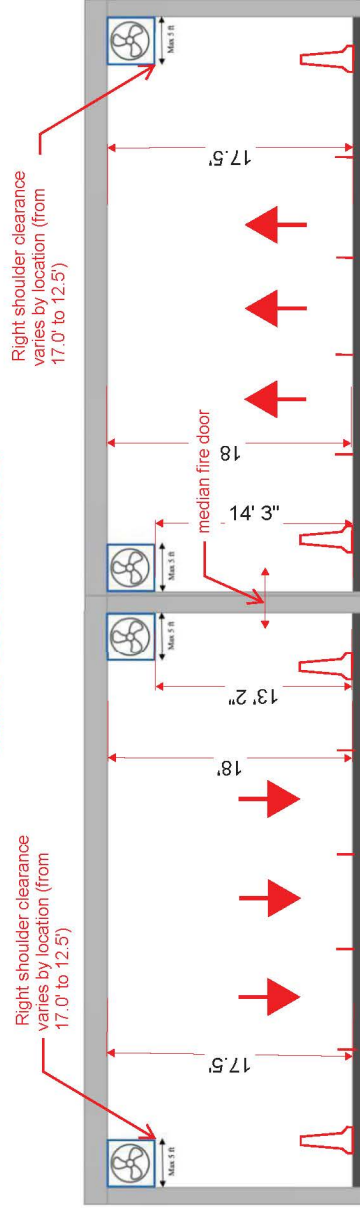


Assumed Southbound Barrel  
(facing north)

Emergency  
Egress Route

Assumed Northbound Barrel  
(facing north)

**Highway Cover Typical Section**



Right shoulder clearance  
varies by location (from  
17.0' to 12.5')

Right shoulder clearance  
varies by location (from  
17.0' to 12.5')

Assumed Southbound Barrel  
(facing north)

Assumed Northbound Barrel  
(facing north)

Note: All dimensions are preliminary  
and will be refined as part of future  
design progression

**Highway Cover Preliminary  
Minimum Vertical Clearances**

Clearance Elevation Table

Northbound	*Right Shldr	**Median Shldr	Note
1	14' 9"	15' 9"	
2	16' 9"	16' 6"	
3	18' 0"	15' 3"	
4	15' 7"	16' 0"	
5	14' 10"	15' 9"	
6	12' 11"	14' 3"	Min clearance northbound

\*Fan Clearances are all behind the barrier

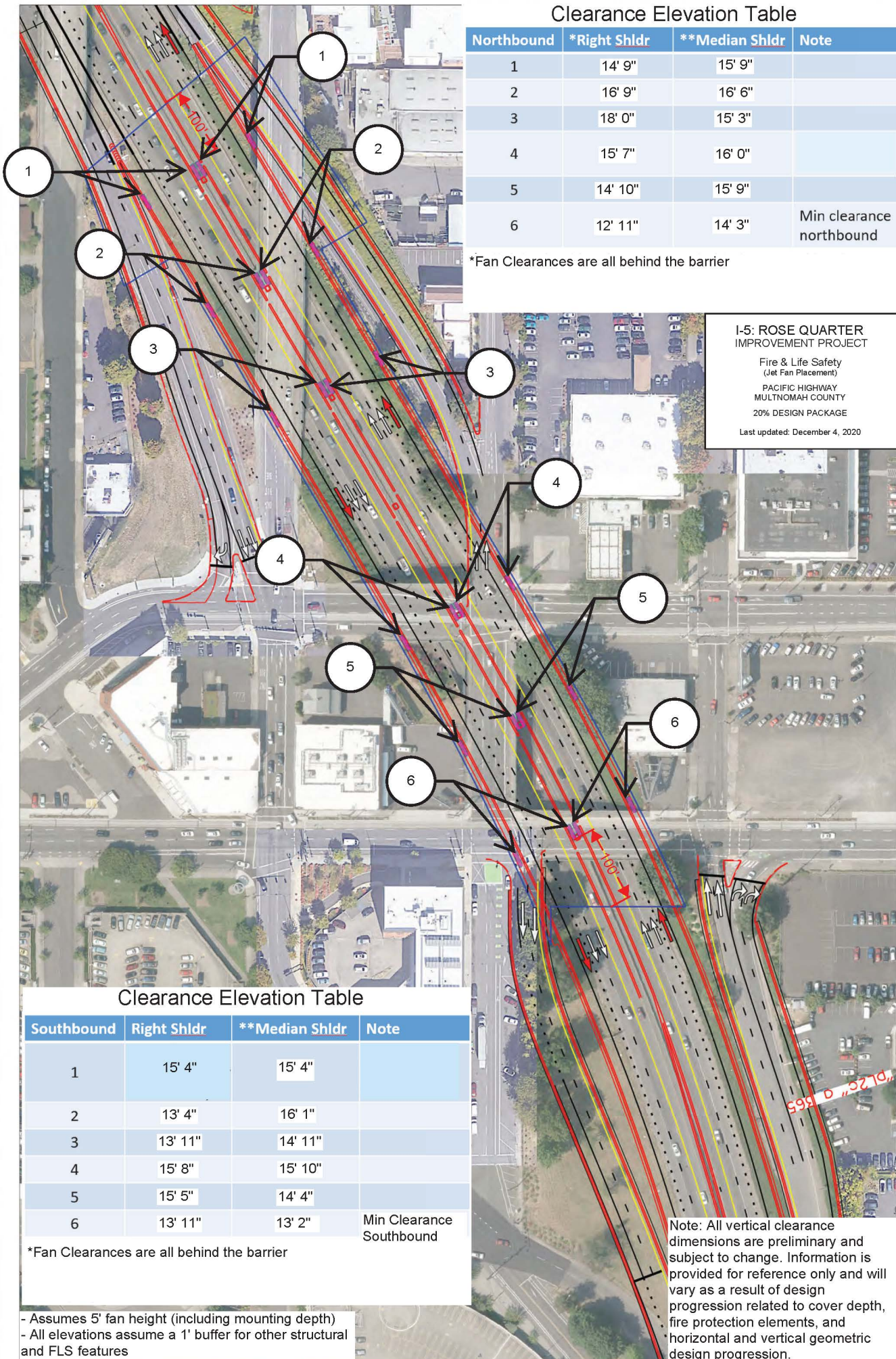
I-5: ROSE QUARTER IMPROVEMENT PROJECT

Fire & Life Safety (Jet Fan Placement)

PACIFIC HIGHWAY MULTNOMAH COUNTY

20% DESIGN PACKAGE

Last updated: December 4, 2020



Clearance Elevation Table

Southbound	Right Shldr	**Median Shldr	Note
1	15' 4"	15' 4"	
2	13' 4"	16' 1"	
3	13' 11"	14' 11"	
4	15' 8"	15' 10"	
5	15' 5"	14' 4"	
6	13' 11"	13' 2"	Min Clearance Southbound

\*Fan Clearances are all behind the barrier

- Assumes 5' fan height (including mounting depth)
- All elevations assume a 1' buffer for other structural and FLS features

Note: All vertical clearance dimensions are preliminary and subject to change. Information is provided for reference only and will vary as a result of design progression related to cover depth, fire protection elements, and horizontal and vertical geometric design progression.

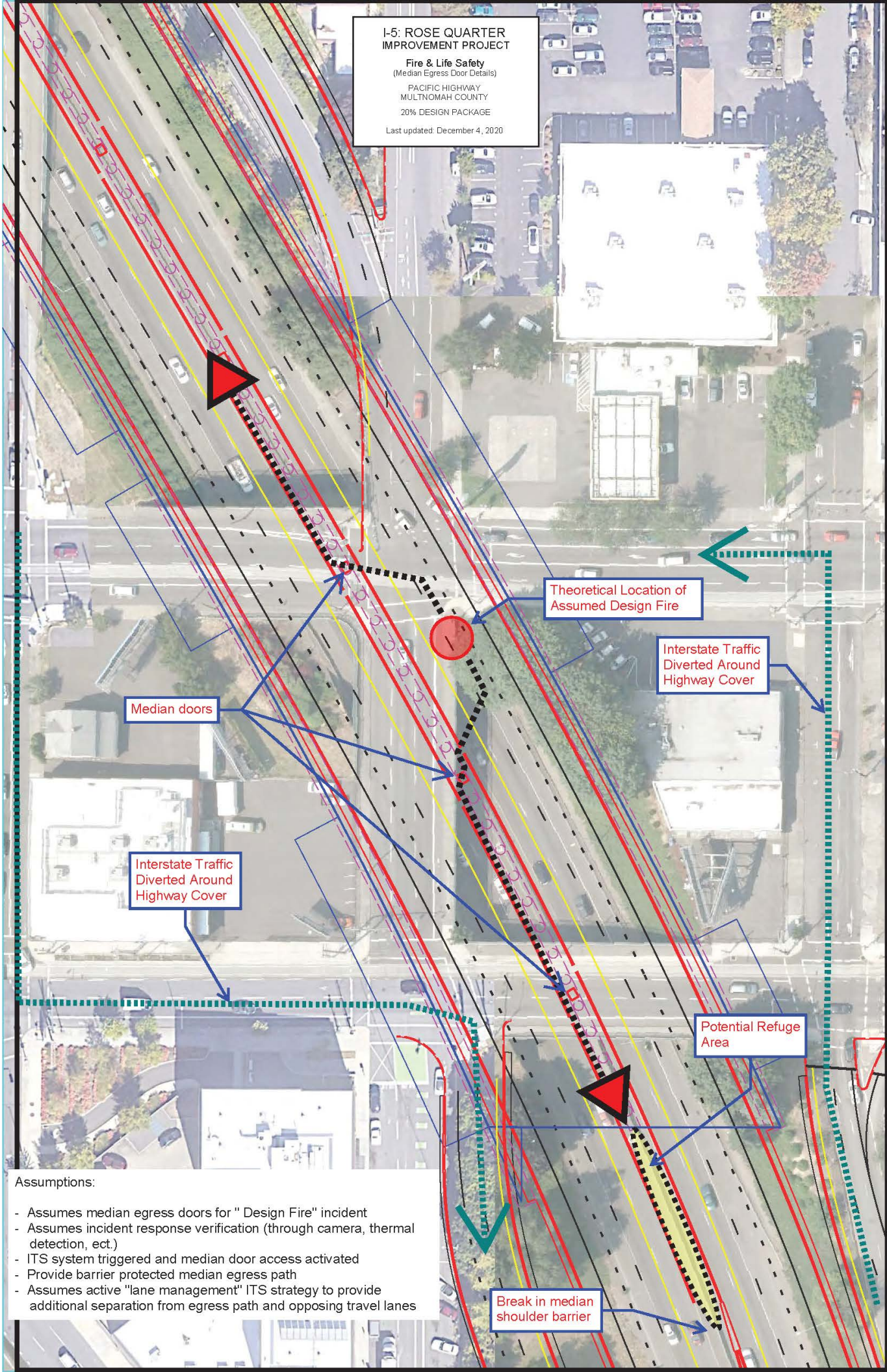


I-5: ROSE QUARTER  
IMPROVEMENT PROJECT

Fire & Life Safety  
(Median Egress Door Details)

PACIFIC HIGHWAY  
MULTNOMAH COUNTY  
20% DESIGN PACKAGE

Last updated: December 4, 2020



Median doors

Theoretical Location of Assumed Design Fire

Interstate Traffic Diverted Around Highway Cover

Interstate Traffic Diverted Around Highway Cover

Potential Refuge Area

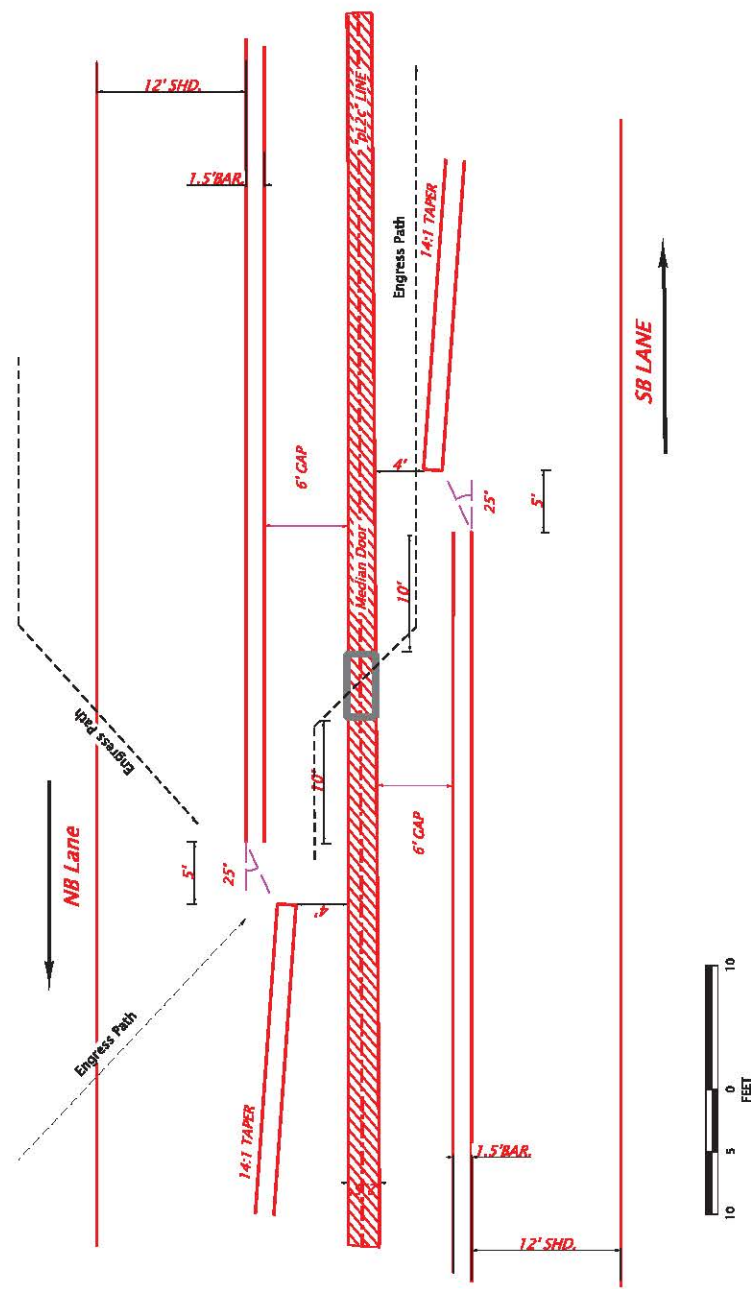
Break in median shoulder barrier

Assumptions:

- Assumes median egress doors for " Design Fire" incident
- Assumes incident response verification (through camera, thermal detection, ect.)
- ITS system triggered and median door access activated
- Provide barrier protected median egress path
- Assumes active "lane management" ITS strategy to provide additional separation from egress path and opposing travel lanes



**I-5 ROSE QUARTER**  
 IMPROVEMENT PROJECT  
 Fire & Life Safety  
 (Median Egress Door Details)  
 PACIFIC HIGHWAY  
 MULTNOMAH COUNTY  
 20% DESIGN PACKAGE  
 Last updated: December 4, 2020



All dimensions shown are preliminary and for discussion purpose. Information is subject to change